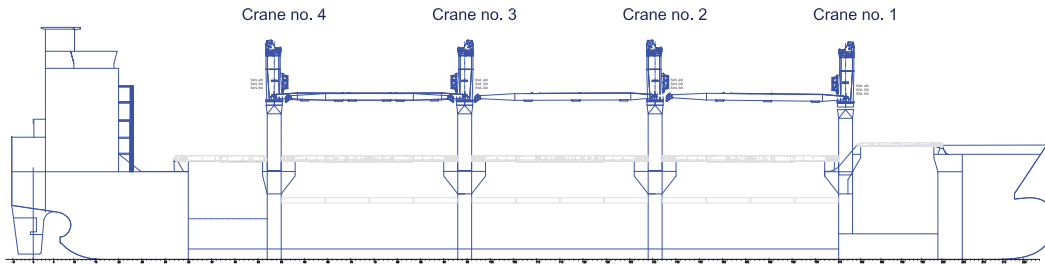


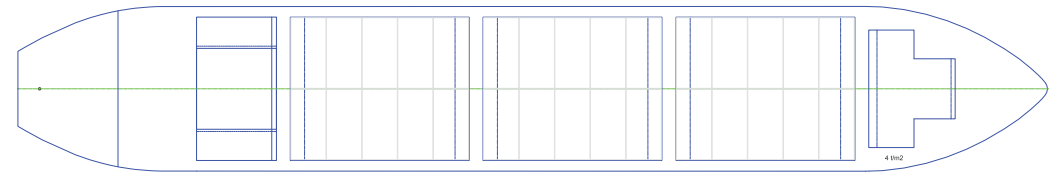
W-CLASS VESSELS

SIDE VIEW



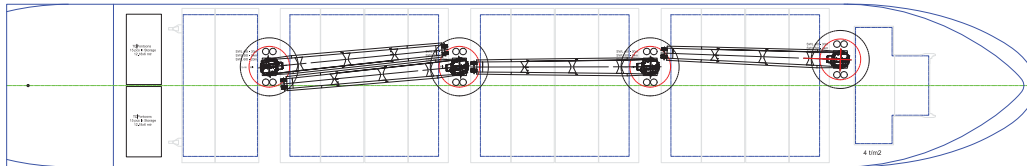
TWEENDECK

Intake is always subject to vessel's stability, trim, permissible weights and is subject to regulations of visibility. Lifting capacity of vessel's cranes is subject to vessel's stability and can depend on cargo/ballast on board. Container data as well as bale capacity assumes tweendeck ashore. The figures given herewith are for "reference" only and they must not be used as basis for Charter Parties or other contracts without AAL's explicit written authority.
For more information on individual vessels within the AAL fleet, please contact sales.sg@aalshipping.com.

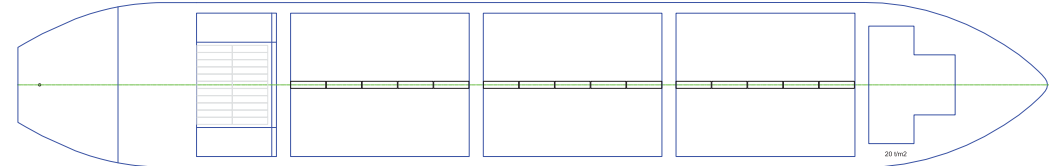


WEATHER DECK

Crane no. 1-4
1 SWL 60t - 20m
2 SWL 50t - 24m
3 SWL 40t - 30m



TANK TOP



AAL Australia
T: +61 7 3332 8555
E: sales.au@aalshipping.com

AAL Canada
T: +1 778 227 4610
E: sales.ca@aalshipping.com

AAL China
T: +86 21 6135 9600
E: sales.cn@aalshipping.com

AAL Europe
T: +49 40 361 304 810 / 820
E: sales.eu@aalshipping.com

AAL Japan
T: +81 3 5579 9709
E: sales.jp@aalshipping.com

AAL Korea
T: +82 2 6388 7870
E: sales.kr@aalshipping.com

AAL Middle East
T: +97 1 4 450 47 00
E: sales.me@aalshipping.com

AAL USA
T: +1 713 980 1100
E: sales.us@aalshipping.com

AAL Headquarters
Singapore
T: +65 6248 3600
sales.sg@aalshipping.com
www.aalshipping.com



powered by partnerships

W-CLASS VESSELS

Type	Multipurpose Dry Cargo Ship, Equipped for Carriage of Containers			
Class	GL + 100 A5 Multi Purpose Dry Cargo Ship, Equipped for Carriage of Containers, Solas II-2, Reg.19, Strengthened for Heavy Cargo, G, ESP, IW, NAV-O, Environmental Passport, BMW, DG, DBC, + MC AUT			
Deadweight	33,217 t (without Tweendecks) 32,387 t (with Tweendecks)			
GT/NT	22863 / 10602			
LOA	179.50 m			
LBP	169.00 m			
Breadth (Moulded)	28.00 m			
Depth (Moulded)	15.10 m			
Draft (Summer)	10.80 m			
Cargo Hold Dimensions	Hold	Capacity w/o TWD (m³)	Capacity with TWD in Lower Position (m³)	Hatch Size (L X B)
	1	3,242	3,242	12.6m x 20.04m/10.19m
	2	10,551	9,711	25.6m x 24.4m
	3	10,551	9,711	25.6m x 24.4m
	4	10,551	9,711	25.6m x 24.4m
	5	4,147	4,147	12.8m x 24.4m
	Total	39,042	36,522	(Tweendeck in holds 2/3/4)

Tanktop Sizes	Hold	Area (sqm)	Bottom Size (L x B)
	1	227	7.8/6.9m x 20.1/10.2m
	2	742	30.4m x 24.4m
	3	742	30.4m x 24.4m
	4	742	30.4m x 24.4m
	5	197 + 135 (monkey rocks)	13.6m x 14.5m (24.4m)
	Total	2650 + 135 (MR)	= 2,785 tank top area total
Clear height in Hold	14.86 m		
Co2 - fitted	Hold 1, 2, 3, 4, 5; Sprinkler system in hold 1		
Hatch	Hydraulic folding type hatchcovers covers Always one panel folding upright forward and aft		
	Hold	Area (sqm)	Hatch Cover Sizes (L X B)
	Hold 1	206	6.9/6.1 m x 20.5/10.6 m
	Hold 2-4	2067	29.1 m x 26.5 m (each)
	Hold 5	352	13.3 m x 26.5 m
	Total	2,625	

Cargo Capacity (Volume/Grain/Bale/Total)	36522 cbm Tweendecks installed / 39042 cbm Tweendecks stowed on deck
Max Permissible Load	Tanktop = 20t/sqm; tweendeck = 4t/sqm; hatch covers = 4t/sqm; Container stack weight = 150t per 20ft and 40ft
Jump Loads	Hold 3+5 or 1+3 or 2+4 or 1+3+5 can be empty while remaining ones are loaded
Container Capacity	1158 TEU x 20' / 545 x 40' 544 FEU
Crane Capacity	4 electro hydraulic single deck crane; SWL = 60t
Maximum Lift	Combinable above hatch 2/3/4 = 110t by means of a traverse beam
Main Engine	MAN B&W, 1 x 6S50 MC-C7, 8,800kW
Ventilation	Ventilation hold 1,2,3,4,5 = 6 x fold mechanically, redundant
Dangerous Cargo	in line with IMDG code and vessels certificates
Timber Fitted	Vessel fitted with stanchion pockets and lashing points. No slings/stanchions or lashing materials
Other	Australia, Suez, Panama fitted Vessel suitable for grab discharge Vessel has traverse beam on board Vessel has no bowthruster

VESSEL NAME	WARNOV JUPITER	WARNOV MARS	WARNOV MERKUR	WARNOV MOON
YEAR BUILT	2011	2011	2010	2010
IMO NO.	9594482	9509712	9509695	9509671
CALL SIGN	D5AD5	A8YQ5	A8WI4	A8VX3
FLAG	LIBERIA	LIBERIA	LIBERIA	LIBERIA

AAL's highly flexible 33,217dwt W-Class vessels serve a growing portfolio of global services and offer our customers significant economies of scale and market-leading intake capacity on every sailing – able to stow heavy-lift project cargo alongside breakbulk and dry bulk.



www.aalshipping.com | www.aalshipping.com.cn



WeChat ID: **AALSHIPPING**
新加坡澳亚航运有限公司上海代表处



powered by partnerships