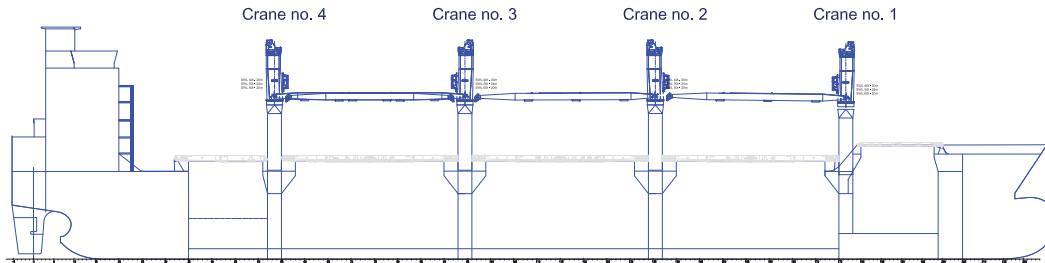


# W-CLASS VESSELS (BULK CONFIGURATION)

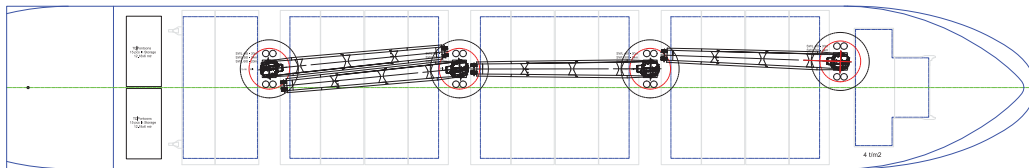
## SIDE VIEW



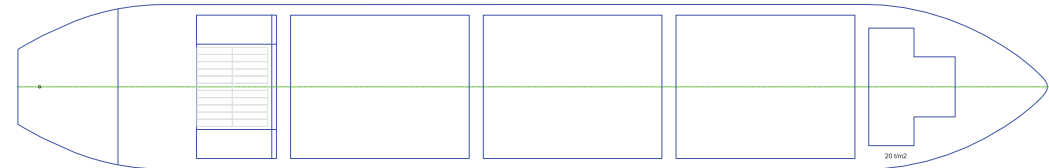
Intake is always subject to vessel's stability, trim, permissible weights and is subject to regulations of visibility. Lifting capacity of vessel's cranes is subject to vessel's stability and can depend on cargo/ballast on board. Container data as well as bale capacity assumes tweendeck ashore. The figures given herewith are for "reference" only and they must not be used as basis for Charter Parties or other contracts without AAL's explicit written authority. For more information on individual vessels within the AAL fleet, please contact sales.sg@aalshipping.com.

## WEATHER DECK

Crane no. 1-4  
 1 SWL 60t - 20m  
 2 SWL 50t - 24m  
 3 SWL 40t - 30m



## TANK TOP



**AAL Australia**  
 T: +61 7 3332 8555  
 E: sales.au@aalshipping.com

**AAL Canada**  
 T: +1 778 227 4610  
 E: sales.ca@aalshipping.com

**AAL China**  
 T: +86 21 6135 9600  
 E: sales.cn@aalshipping.com

**AAL Europe**  
 T: +49 40 361 304 810 / 820  
 E: sales.eu@aalshipping.com

**AAL Japan**  
 T: +81 3 5579 9709  
 E: sales.jp@aalshipping.com

**AAL Korea**  
 T: +82 2 6388 7870  
 E: sales.kr@aalshipping.com

**AAL Middle East**  
 T: +97 1 4 450 47 00  
 E: sales.me@aalshipping.com

**AAL USA**  
 T: +1 713 980 1100  
 E: sales.us@aalshipping.com

**AAL Headquarters**  
 Singapore  
 T: +65 6248 3600  
 sales.sg@aalshipping.com  
 www.aalshipping.com



powered by partnerships

# W-CLASS VESSELS (BULK CONFIGURATION)

<b>Type</b>	Multipurpose Dry Cargo Ship, Equipped for Carriage of Containers		
<b>Class</b>	GL + 100 A5 Multi Purpose Dry Cargo Ship, Equipped for Carriage of Containers, Solas II-2, Reg.19, Strengthened for Heavy Cargo, G, ESP, IW, NAV-O, Environmental Passport, BMW, DG, DBC, + MC AUT		
<b>Deadweight</b>	33,217 t (without Tweendecks) 32,387 t (with Tweendecks)		
<b>GT/NT</b>	22863 / 10602		
<b>LOA</b>	179.50 m		
<b>LBP</b>	169.00 m		
<b>Breadth (Moulded)</b>	28.00 m		
<b>Depth (Moulded)</b>	15.10 m		
<b>Draft (Summer)</b>	10.80 m		
<b>Cargo Hold Dimensions</b>	<b>Hold</b>	<b>Capacity (m³)</b>	<b>Hatch Size (L X B)</b>
	1	3,242	12.6m x 20.04m/10.19m
	2	10,551	25.6m x 24.4m
	3	10,551	25.6m x 24.4m
	4	10,551	25.6m x 24.4m
	5	4,147	25.6m x 24.4m
	<b>Total</b>	<b>39,042 (inc. tweendeck)</b>	

<b>Tanktop Sizes</b>	<b>Hold</b>	<b>Area (sqm)</b>	<b>Bottom Size (L x B)</b>
	1	227	7.8/6.9m x 20.1/10.2m
	2	742	30.4m x 24.4m
	3	742	30.4m x 24.4m
	4	742	30.4m x 24.4m
	5	197 + 135 (monkey rocks)	13.6m x 14.5m (24.4m)
	<b>Total</b>	<b>2650 + 135 (MR) = 2,785 tank top area total</b>	

<b>Clear height in Hold</b>	14.86 m		
<b>Co2 - fitted</b>	Hold 1, 2, 3, 4, 5; Sprinkler system in hold 1		
<b>Hatch</b>	Hydraulic folding type hatchcovers covers Always one panel folding upright forward and aft		
	<b>Hold</b>	<b>Area (sqm)</b>	<b>Hatch Cover Sizes (L X B)</b>
	Hold 1	206	6.9/6.1 m x 20.5/10.6 m
	Hold 2-4	2067	29.1 m x 26.5 m (each)
	Hold 5	352	13.3 m x 26.5 m
	<b>Total</b>	<b>2,625</b>	

<b>Cargo Capacity (Volume/Grain/Bale/Total)</b>	39042 cbm
<b>Max Permissible Load</b>	Tanktop = 20t/sqm; hatch covers = 4t/sqm; Container stack weight = 150t per 20ft and 40ft
<b>Jump Loads</b>	Hold 3+5 or 1+3 or 2+4 or 1+3+5 can be empty while remaining ones are loaded
<b>Container Capacity</b>	1158 TEU / 545 FEU
<b>Crane Capacity</b>	4 electro hydraulic single deck crane; SWL = 60t
<b>Maximum Lift</b>	Combinable above hatch 2/3/4 = 110t by means of a traverse beam
<b>Main Engine</b>	MAN B&W, 1 x 6S50 MC-C7, 8,800kW
<b>Ventilation</b>	Ventilation hold 1,2,3,4,5 = 6 x fold mechanically, redundant
<b>Dangerous Cargo</b>	in line with IMDG code and vessels certificates
<b>Timber Fitted</b>	Vessel fitted with stanchion pockets and lashing points. No slings/stanchions or lashing materials
<b>Other</b>	Australia, Suez, Panama fitted Vessel suitable for grab discharge Vessel has traverse beam on board Vessel has no bowthruster

VESSEL NAME	WARNOV JUPITER	WARNOV MARS	WARNOV MERKUR	WARNOV MOON
YEAR BUILT	2011	2011	2010	2010
IMO NO.	9594482	9509712	9509695	9509671
CALL SIGN	D5AD5	A8YQ5	A8WI4	A8VX3
FLAG	LIBERIA	LIBERIA	LIBERIA	LIBERIA

AAL's highly flexible 33,217dwt W-Class vessels serve a growing portfolio of global services and offer our customers significant economies of scale and market-leading intake capacity on every sailing – able to stow heavy-lift project cargo alongside breakbulk and dry bulk.



[www.aalshipping.com](http://www.aalshipping.com) | [www.aalshipping.com.cn](http://www.aalshipping.com.cn)



WeChat ID: **AALSHIPPING**  
新加坡澳亚航运有限公司上海代表处



powered by partnerships