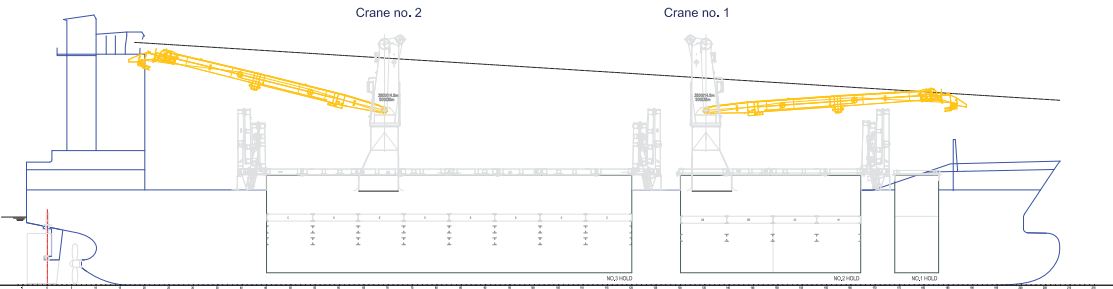
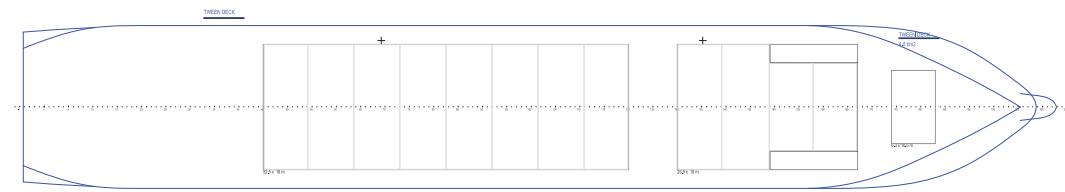


SIDE VIEW



TWEENDECK

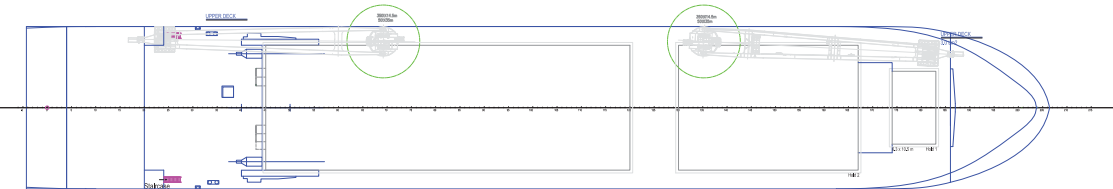
Intake is always subject to vessel's stability, trim, permissible weights and is subject to regulations of visibility. Lifting capacity of vessel's cranes is subject to vessel's stability and can depend on cargo/ballast on board. Container data as well as bale capacity assumes tweendeck ashore. The figures given herewith are for "reference" only and they must not be used as basis for Charter Parties or other contracts without AAL's explicit written authority.
For more information on individual vessels within the AAL fleet, please contact sales.sg@aalshipping.com.



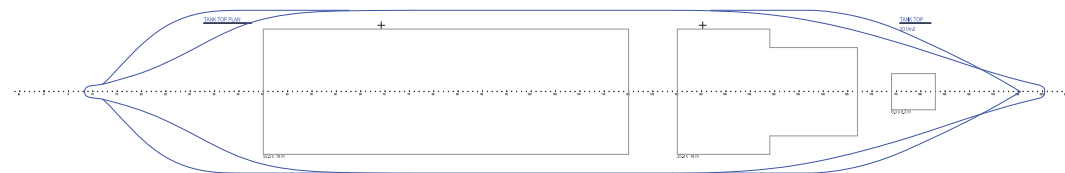
WEATHER DECK

Crane no. 2
2,1 SWL 350t
2,2 SWL 320t
2,3 SWL 250t
2,4 SWL 200t
2,5 SWL 140t
2,6 auxiliary hoist
SWL 40t

Crane no. 1
1,1 SWL 350t
1,2 SWL 320t
1,3 SWL 250t
1,4 SWL 200t
1,5 SWL 140t
1,6 auxiliary hoist
SWL 40t



TANK TOP



AAL Australia
T: +61 7 3332 8555
E: sales.au@aalshipping.com

AAL Canada
T: +1 778 227 4610
E: sales.ca@aalshipping.com

AAL China
T: +86 21 6135 9600
E: sales.cn@aalshipping.com

AAL Europe
T: +49 40 361 304 810 / 820
E: sales.eu@aalshipping.com

AAL Japan
T: +81 3 3541 9192
E: sales.jp@aalshipping.com

AAL Korea
T: +82 2 6388 7870
E: sales.kr@aalshipping.com

AAL Middle East
T: +97 1 4 450 47 00
E: sales.me@aalshipping.com

AAL USA
T: +1 713 980 1100
E: sales.us@aalshipping.com

AAL Headquarters
Singapore
T: +65 6248 3600
sales.sg@aalshipping.com
www.aalshipping.com



powered by partnerships

S-CLASS VESSELS

Type	Multipurpose Dry Cargo Ship	Floor Space	Tank Top: 1,377 m ² Tween Deck: 1,411 m ² + Additional 66 m ² of 20FT F/L Deck Weather Deck: 1,584 m ²	Anti-Heeling System	The vessel is equipped with anti-heeling tanks, with an automatic system fully monitored and controlled from the wheelhouse, cargo office and the ECR.
Class	DNV-GL 100 A5E; BWM; Equipped for carriage of containers; NAV-O; Strengthened for heavy cargo	Max Permissible Load	Weather Deck Hatch Covers: 3.00 t/m ² Tween Deck Hatch Covers: 4.00 t/m ² Tank Top: 20.0 t/m ²	Dehumidifiers / Ventilation	Ventilation of holds is in accordance with requirements for carriage of dangerous cargo.
Deadweight	19,163.1 t (summer)	Container Capacity (Total TEU)	412 TEU in holds 557 TEU on deck	Dangerous Cargo	In No. 1 Cargo Hold: Class 1.1 ~ 1.6, 1.4(S), 2, 3, 4.1, 4.2, 4.3, 5.1, 6.1, 8,9 in package form. Class 4.1, 4.2, 5.1, 6.1, 7, 8, 9 in solid bulk form.
GT/NT	14,053 / 5,373	Container Capacity (Total FEU)	461 FEU + 46 TEU		
LOA	149.02 m	Reefer Containers	50 Reefer Points on Deck with Reefer Monitoring System in Cargo Office		In No. 2 and No. 3 Cargo Hold: Class 1.4(S), 2.2, 2.3, 3 (FP ≥ 23°C - ≤ 61°C), 6.1 (liquids) and 8 in packaged form. Class 4.1, 4.2, 4.3, 5.1, 6.1 9 (liquids FP ≥ 23°C - ≤ 61°C), 6.1(solids), 8(liquids) FP ≥ 23°C - ≤ 61°C) and 9 in closed freight containers.
LBP	140.30 m	Cargo Gear	Crane 1 & 2 (Port Side): 350 t at 14.50 m / 140 t at 32.00 m		
Breadth (Moulded)	23.40 m	Maximum Lift	Combined 700 mt (Crane 1 & 2)		
Depth (Moulded)	13.50 m	Main Engine	Wartsila 6RTA 48-B MCR: 8,730 kW at 127 RPM CSR: 7,857 kW at 122.6 RPM		
Draft (Summer)	9.80 m	Auxiliary Engines (3 Sets)	MAN Hyundai 5L23/30H 645 kW at 720 RPM	Smoke Detection / Fire Fighting	All cargo holds are equipped with a fire detection and a CO2 fire extinguishing system. Cargo hold No. 1 is additionally equipped with a sprinkler fire extinguishing system.
Holds	3	Bow Thruster Rated Power	700 kW		
Hatches	3				
Tweendecks	1 Tweendeck - 3 Positions				
Hatch Dimensions (L x B)	No. 1: 6.30 x 10.50 m No. 2: 25.90 x 18.00 m No. 3: 52.50 x 18.00 m				
Cargo Capacity (Volume 100%)	No. 1 Cargo Hold 660.90 cbm No. 2 Cargo Hold 6,020.40 cbm No. 3 Cargo Hold 13,297.90 cbm				
Total	19,979.20 cbm				

VESSEL NAME	AAL BANGKOK	AAL DAMPIER	AAL FREMANTLE	AAL NANJING
YEAR BUILT	2012	2011	2011	2012
IMO NO.	9521564	9521540	9521095	9521552
CALL SIGN	D5OJ7	D5OJ3	D5O18	D5OJ4
FLAG	LIBERIA	LIBERIA	LIBERIA	LIBERIA

Built and designed to go anywhere and with any cargo, this young (year build 2012) and owned class of heavy-lifters combines a 700 t max lift, with three large holds, flexible tweendeck and large open weather deck space. They serve our tramp and semi-liner services around the world, with optimum efficiency and performance.



www.aalshipping.com | www.aalshipping.com.cn



WeChat ID: **AALSHIPPING**
新加坡澳亚航运有限公司上海代表处



powered by partnerships