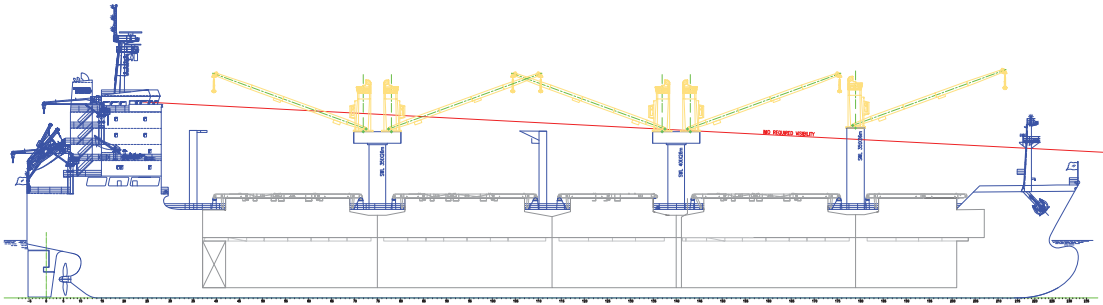
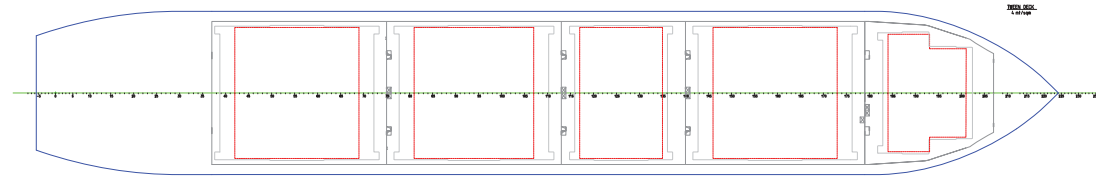


# M-CLASS VESSELS

SIDE VIEW



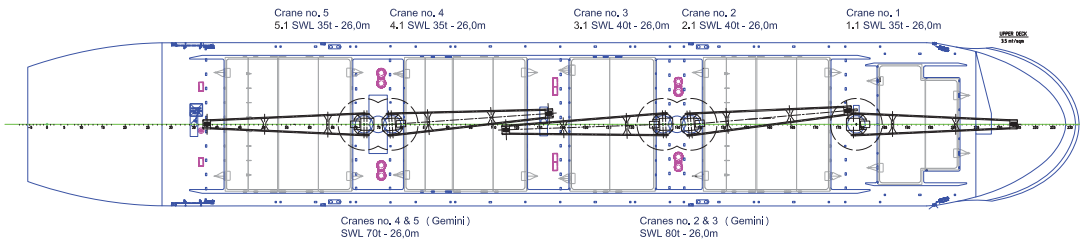
TWEENDECK



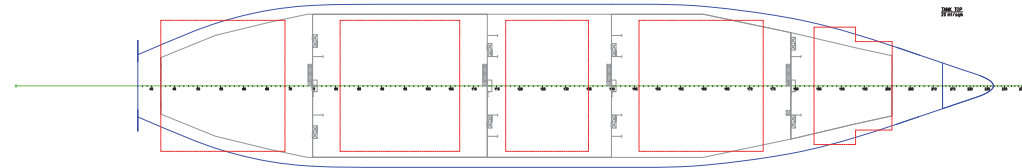
Intake is always subject to vessel's stability, trim, permissible weights and is subject to regulations of visibility. Lifting capacity of vessel's cranes is subject to vessel's stability and can depend on cargo/ballast on board. Container data as well as bale capacity assumes tweendeck ashore. The figures given herewith are for "reference" only and they must not be used as basis for Charter Parties or other contracts without AAL's explicit written authority.

For more information on individual vessels within the AAL fleet, please contact [sales.sg@aalshipping.com](mailto:sales.sg@aalshipping.com).

WEATHER DECK



TANK TOP



**AAL Australia**  
T: +61 7 3332 8555  
E: [sales.au@aalshipping.com](mailto:sales.au@aalshipping.com)

**AAL Canada**  
T: +1 778 227 4610  
E: [sales.ca@aalshipping.com](mailto:sales.ca@aalshipping.com)

**AAL China**  
T: +86 21 6135 9600  
E: [sales.cn@aalshipping.com](mailto:sales.cn@aalshipping.com)

**AAL Europe**  
T: +49 40 361 304 810 / 820  
E: [sales.eu@aalshipping.com](mailto:sales.eu@aalshipping.com)

**AAL Japan**  
T: +81 3 5579 9709  
E: [sales.jp@aalshipping.com](mailto:sales.jp@aalshipping.com)

**AAL Korea**  
T: +82 2 6388 7870  
E: [sales.kr@aalshipping.com](mailto:sales.kr@aalshipping.com)

**AAL Middle East**  
T: +97 1 4 450 47 00  
E: [sales.me@aalshipping.com](mailto:sales.me@aalshipping.com)

**AAL USA**  
T: +1 713 980 1100  
E: [sales.us@aalshipping.com](mailto:sales.us@aalshipping.com)

**AAL Headquarters**  
Singapore  
T: +65 6248 3600  
[sales.sg@aalshipping.com](mailto:sales.sg@aalshipping.com)  
[www.aalshipping.com](http://www.aalshipping.com)



powered by partnerships

# M-CLASS VESSELS

<b>Type</b>	Multi-purpose Tweendecker with retractable tweendecks	<b>Hatch Dimensions (L x B)</b>	Hydraulic Folding Type No. 1: 13.60 x 15.40 m No. 2: 21.60 x 22.80 m No. 3: 14.40 x 22.80 m No. 4: 20.80 x 22.80 m No. 5: 21.60 x 22.80 m	<b>Cargo Gear</b>	1 x 35 t crane, centre 2 x 40 t cranes, centre Combinable up to 80 t swl (gemini) 2 x 35 t cranes, centre Combinable up to 70 t swl (gemini) Max hoisting height: 14 m
<b>Class</b>	Lloyds Register, 100A1, Strengthened for Heavy Cargoes, Multi-purpose Dry Cargo Ship, Container Cargoes on Tweendeck and on Upper Deck and All Hatch Covers, IWS, LI, LMC, UMS, Able to Operate as Single Decker	<b>Cargo Capacity (Grain/Bale)</b>	Hold 1: 4,725 / 4,347 m <sup>3</sup> Hold 2: 9,994 / 9,194 m <sup>3</sup> Hold 3: 6,877 / 6,327 m <sup>3</sup> Hold 4: 9,779 / 8,997 m <sup>3</sup> Hold 5: 8,829 / 8,123 m <sup>3</sup>	<b>Maximum Lift</b>	Combined 80 t (Crane 2 & 3)
<b>Deadweight</b>	(Summer) 34,005.50 t on 10.913 m	<b>Total</b>	40,205 / 36,989 m <sup>3</sup> bss tweendecks in upper open position	<b>Main Engine</b>	Up to 14.0kn max service speed STX Max B&W / 6S50MC-CT 9480 kW
<b>GT/NT</b>	International 22998.00 / 12316.00 Panama *0.00 / 19.825.00 Suez *24368.13 / 21.012.35 *Suez and Panama GT/NT are subject to canal authority revision at any time and are not the responsibility of the owner.	<b>Floor Space</b>	5,757m <sup>2</sup> under deck 2,660m <sup>2</sup> on deck	<b>Bow Thruster Rated Power</b>	850 kW
<b>LOA</b>	182.90 m	<b>Max Permissible Load</b>	Tank Top: 20.00 t/m <sup>2</sup> Tween Deck: 4.00 t/m <sup>2</sup> Weather Deck: 3.50 t/m <sup>2</sup>	<b>Cargo Hold</b>	Hold 2+3+4 (lower hold): box-shaped Hold 2+3+4+5 (tweendeck): box-shaped
<b>LBP</b>	174.50 m	<b>Container Capacity (Total TEU)</b>	953 TEU	<b>Tank Capacity</b>	IFO: 863 m <sup>3</sup> (85%) MDO: 156 m <sup>3</sup> (85%) Ballast: 9,741 m <sup>3</sup> Fresh Water: 239 m <sup>3</sup>
<b>Breadth (Moulded)</b>	28.40 m	<b>Container Capacity (Total FEU)</b>	370 FEU	<b>Ventilation</b>	All holds mechanically ventilated Intake: natural Exhaust: mechanical Air changes/hr: 6.00 CO <sub>2</sub> in holds: yes
<b>Depth (Moulded)</b>	15.30 m	<b>Reefer Containers</b>	100 Reefer Containers Points on Deck	<b>Smoke Detection / Fire Fighting</b>	All cargo holds are equipped with a fire detection system and a CO <sub>2</sub> fire extinguishing system.
<b>Draft (Summer)</b>	9.80 m				
<b>Holds</b>	5				
<b>Hatches</b>	5				
<b>Tweendecks</b>	1				

VESSEL NAME	PORTHOS
YEAR BUILT	2009
IMO NO.	9438389
CALL SIGN	3FKD5
FLAG	PANAMA



With a cargo intake of over 40,000 cbm and featuring five large hatch-covered holds, tweendecks and large weather deck space, this adaptive vessel class provides an ideal solution for dry bulk commodities, breakbulk and project cargo.



[www.aalshipping.com](http://www.aalshipping.com) | [www.aalshipping.com.cn](http://www.aalshipping.com.cn)



WeChat ID: **AALSHIPPING**  
新加坡澳亚航运有限公司上海代表处



powered by partnerships