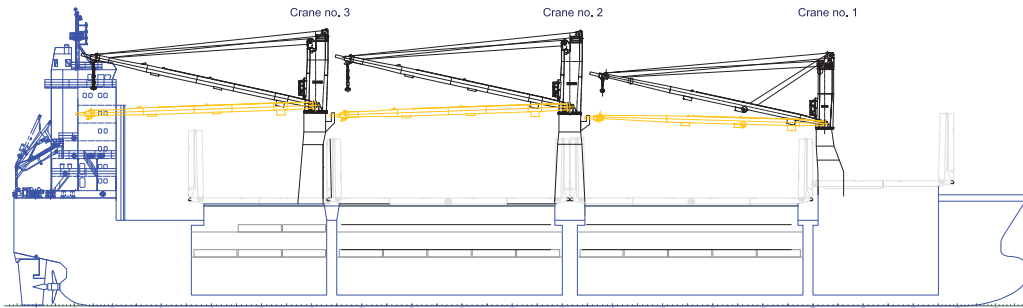


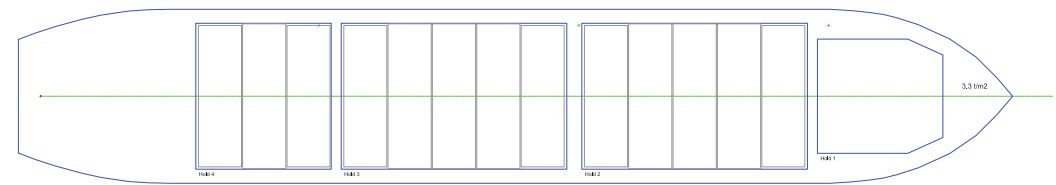
SIDE VIEW



TWEENDECK

Intake is always subject to vessel's stability, trim, permissible weights and is subject to regulations of visibility. Lifting capacity of vessel's cranes is subject to vessel's stability and can depend on cargo/ballast on board. Container data as well as bale capacity assumes tweendeck ashore. The figures given herewith are for "reference" only and they must not be used as basis for Charter Parties or other contracts without AAL's explicit written authority.

For more information on individual vessels within the AAL fleet, please contact sales.sg@aalshipping.com.

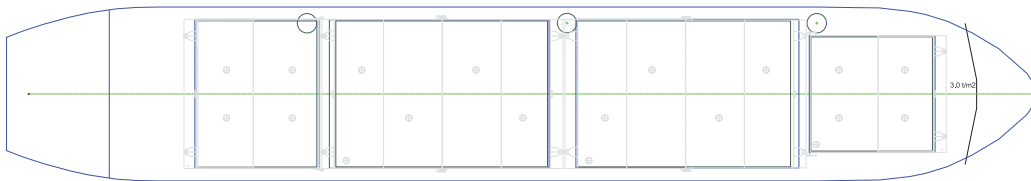


WEATHER DECK

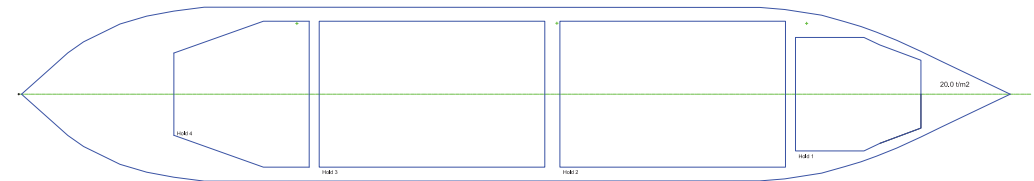
Crane no. 3
6.0 - 17.5 m 120 t
6.0 - 20.0 m 100 t
4.0 - 24.0 m 80 t
4.0 - 26.0 m 70 t
4.0 - 30.0 m 60 t
4.0 - 35.0 m 45 t

Crane no. 2
6.0 - 17.5 m 120 t
6.0 - 20.0 m 100 t
4.0 - 24.0 m 80 t
4.0 - 26.0 m 70 t
4.0 - 30.0 m 60 t
4.0 - 35.0 m 45 t

Crane no. 1
4.7 - 30.0 m 45 t
4.7 - 35.0 m 40 t



TANK TOP



AAL Australia
T: +61 7 3332 8555
E: sales.au@aalshipping.com

AAL Canada
T: +1 778 227 4610
E: sales.ca@aalshipping.com

AAL China
T: +86 21 6135 9600
E: sales.cn@aalshipping.com

AAL Europe
T: +49 40 361 304 810 / 820
E: sales.eu@aalshipping.com

AAL Japan
T: +81 3 5579 9709
E: sales.jp@aalshipping.com

AAL Korea
T: +82 2 6388 7870
E: sales.kr@aalshipping.com

AAL Middle East
T: +97 1 4 450 47 00
E: sales.me@aalshipping.com

AAL USA
T: +1 713 980 1100
E: sales.us@aalshipping.com

AAL Headquarters
Singapore
T: +65 6248 3600
sales.sg@aalshipping.com
www.aalshipping.com



powered by partnerships

G-CLASS VESSELS

Type	Multipurpose Dry Cargo Ship	Hatch Dimensions (L x B)	No. 1: 18.96 x 18.00 m No. 2: 33.57 x 23.00 m No. 3: 33.57 x 23.00 m No. 4: 18.96 x 23.00 m	Container Capacity (Total FEU)	621 FEU + 59 TEU
Class	+ 100 A5 E1, Equipped for carriage of containers, SOLAS-II-2, Reg. 19 G IW, Strengthened for heavy cargo	Cargo Capacity (Volume 100%)	No. 1: 5,882 cbm No. 2: 11,589 cbm No. 3: 11,589 cbm No. 4: 6,645 cbm	Reefer Containers	100 Reefer Points
Deadweight	25,734 t (summer)	Total	35,706 cbm	Cargo Gear	Crane 1: SWL 45t 4.7-30.0 m Crane 2 & 3: SWL 120t 6.0-17.5.0 m
GT/NT	19,128 / 9,736	Floor Space	Tank Top: 2,481 m ² Tweendeck: 2,125 m ² Weather Deck: 2,321 m ²	Maximum Lift	Combined 240 t (cranes 2 and 3)
LOA	159.89 m	Max Permissible Load	Weather Deck Hatch Covers: 3.00 t/m ² Tweendeck Hatch Covers: 3.20 t/m ² Tank Top: 20.00 t/m ²	Main Engine	STX-MAN 6S40ME-B9 MCR 6,810 kW at 146 RPM CSR 6,469 kW at 143.5 RPM
LBP	152.00 m	Container Capacity (Total TEU)	1,620 TEU	Auxiliary Engines (3 Sets)	Yanmar 6N18AL-EV 660kW at 900 RPM
Breadth (Moulded)	27.40 m			Bow Thruster Rated Power	850kW
Depth (Moulded)	13.50 m			Dehumidifiers / Ventilation	All holds mechanically ventilated / 6 air changes per hour
Draft (Summer)	9.80 m			Dangerous Cargo	Class 1-9 (except 1.1-1.6, 2.3 and 5.2) can be loaded in Hold No. 4 in packaged form. Class 1-9 can be loaded on upper deck / hatch covers in packaged form.
Holds	4				
Hatches	4				
Tweendecks	Tweendecks in holds No. 2, 3 and 4				

VESSEL NAME	AAL GENOA	AAL GLADSTONE	PACIFIC ACTION
YEAR BUILT	2010	2009	2010
IMO NO.	9393553	9393541	9393565
CALL SIGN	D5RH2	5BRV2	5BXJ2
FLAG	LIBERIA	CYPRUS	CYPRUS



An extremely flexible heavy lift vessel class, with adaptable configurations to fit all cargo types and a maximum lift capacity of 240 t. These tween-deckers are less than 10 years old and feature four large hatch covered holds, a weather deck space of 2,300 m² and cargo intake capacity of approximately 36,000 cbm.



www.aalshipping.com | www.aalshipping.com.cn



WeChat ID: **AALSHIPPING**
新加坡澳亚航运有限公司上海代表处



powered by partnerships